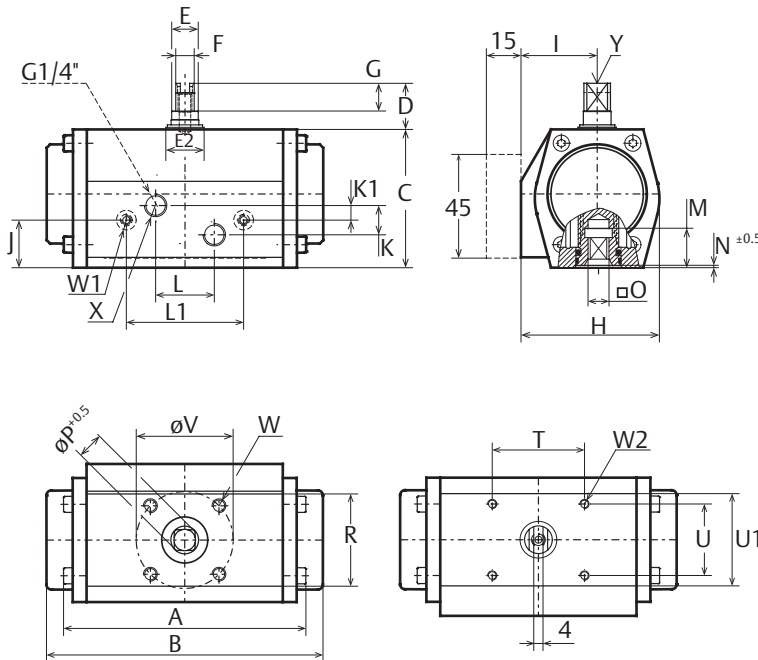


Data sheet F12

Metric - ISO5211



Dim. in mm		Size 12									
A	F	B	F	C	D	E	E2	F	G	H	I
103	118	60	20	16	23	10	12	60	33		
J	K	K1	L	L1	M	N	O max.	O min.	P		
21	12.7	6.4	25.4	50.8	16.5	1	9.14	9.05	12.1		
R	R1	T	U	V	W	W1	W2	X	Y		
40	40	40	31	42	M6x8	M4x5	M4x5	G1/8"	M6x12		

Principle			
Pneumatic rack & pinion actuator			
General Data			
Bore		46	mm
Stroke		12.6	mm
Weight	SR	0.6	kg
	DA	0.7	kg
Volume	Port A	0.05	L
	Port B	0.06	L
Air connection		2x 1/8"	BSP
Pressure range	MOP	8	barg
	SR	3-8	barg
	DA	0.2 - 8	barg
Pressure media	Clean, dry or lubricated air or inert gas.		
Cycle speed DA	Open	0.4	Sec.
	Close	0.4	Sec.
Cycle speed SR	Open	0.4	Sec.
	Close	0.4	Sec.
Temperature range	-20 °C to +80 °C		
Lubrication	Lubricated for life ⁽¹⁾		
Stroke	90°		
Finish	Polyurethane powder coat		

1. According EN 15714-3.
2. Test conditions:
Solenoid with flow capacity: 0.6 m³/hr;
Pipe diameter: 6 mm; Medium: clean air,
Supply pressure: 5.5 barg ~ 80 psig;
Load: with average load; Stroke: 90°;
Temperature: Room temperature
3. SR = Spring-Return, DA = Double-Acting
MOP = Maximum Operating Pressure

Torque Output																				
Spring-Return																				
Spring set	Spring Stroke Torque		Air Stroke Torque (Nm)																	
			3.0 barg		3.5 barg		4.0 barg		4.5 barg		5.0 barg		5.5 barg		6.0 barg		7.0 barg		8.0 barg	
	Start	End	Start	End	Start	End	Start	End	Start	End	Start	End	Start	End	Start	End	Start	End	Start	End
2	7.2	4.6	-	-	3.8	1	5.1	2.3	6.4	3.6	7.7	4.9	9.0	6.2	10.3	7.5	12.9	10.1	15.6	12.8
Double-Acting			7.3		8.5		9.7		11.0		12.2		13.4		14.6		17.1		19.6	

Notes:

- Volume is the actual free air volume at 1 atm
- Flange and square drive to ISO5211
- For further information regarding options, materials, certifications and additional execution please contact your Regional Sales Office.

European Directives:

- PED: Suitable for use with group 2 gases according to Pressure Equipment Directive (PED) 2014/68/EU
- ATEX: Suitable for use in hazardous areas classified II 2 GD, zones 1 or 2 (gases) and 21 or 22 (dust) according to ATEX Directive 2014/34/EU
- For the Configuration Code please consult EFG.02.01.EN